

SPOOL INSULATORS

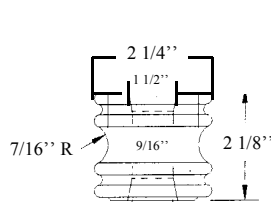


FIG. 1

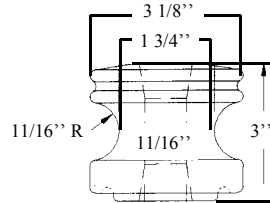


FIG. 2

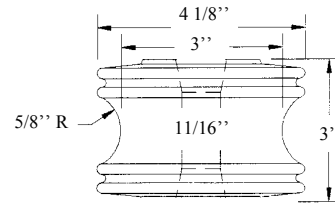


FIG. 3

CATALOG NUMBER	ANSI CLASS	FIG. NO.	ULTIMATE STRENGTH	LOW FREQUENCY FLASHOVER kV DRY	LOW FREQUENCY FLASHOVER kV WET		APPROX. WEIGHT PER 100	STD. PACK
					VERT.	HORZ.		
U53 – 1G	53 – 1	1	2000 LBS.	20	8	10	50 LBS.	100
U53 – 2G	53 – 2	2	3000 LBS.	25	12	15	118 LBS.	50
U53 – 3G	53 – 3	—	4000 LBS.	25	12	15	134 LBS.	50
U53 – 4G	53 – 4	3	4500 LBS.	25	12	15	250 LBS.	25
U53 – 5G	53 – 5	—	6000 LBS.	35	18	25	258 LBS.	20

THE ABOVE PORCELAIN SPOOL INSULATORS ARE OFFERED IN THE STANDARD "SKY GRAY" GLAZE. (ANSI – 70) FOR WHITE OR BROWN GLAZE ADD THE SUFFIX "W" OR "B" TO THE CATALOG NUMBER.