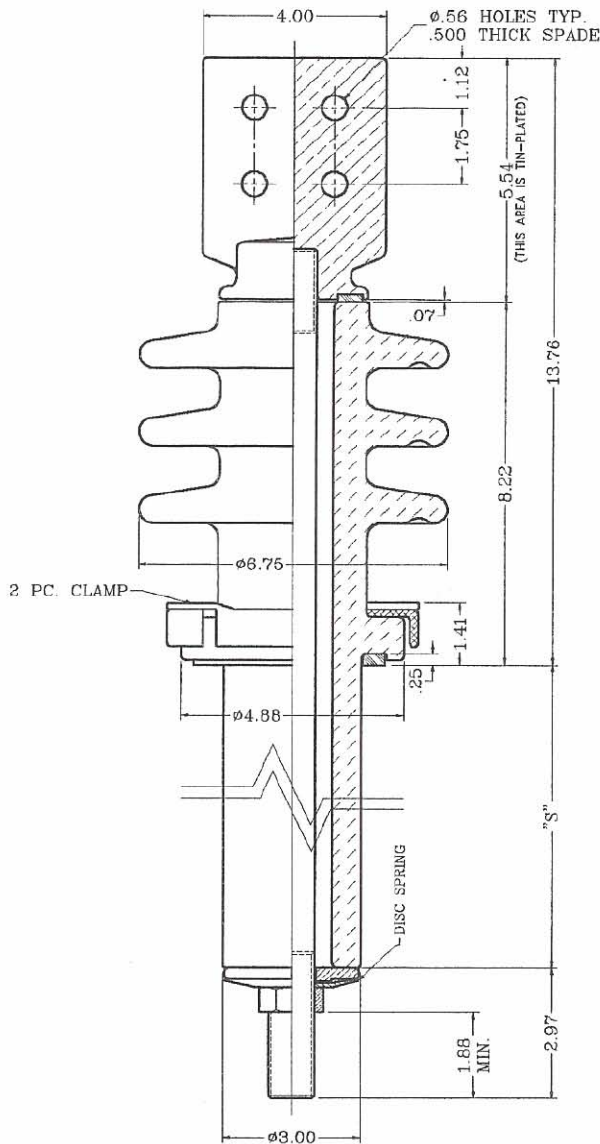


POWER BUSHING ASSEMBLIES 15kV CLASS, 110kV BIL, 15.00" CREEP

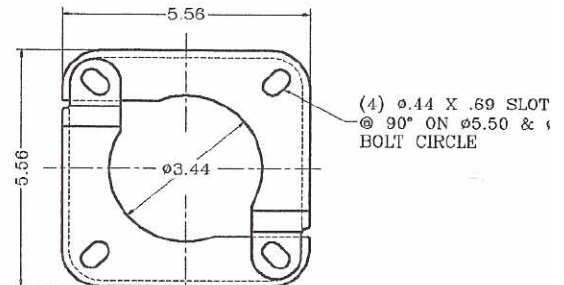
These bushings are designed for transformer and special power apparatus applications. **The electrical ratings given are based on use in a liquid filled transformer with the lower end of the bushing under oil.** Porcelain is gray glazed all over and the top skirt are designed for outdoor application.

Spade casting is pure copper and tin-plated. 97% min. electrical conductivity guaranteed. Clamps and washers are non-magnetic. Constant gasket pressure to top terminal is maintained by disc springs to compensate for the thermal expansion and contraction of the copper stud. Nitrile (Buna-N) gasket is standard. For ordering assemblies with the cork-rubber composition gaskets, add the suffix "C" to the part number.

Bushings are designed for mounting in $\phi 3.13$ (min.) hole.



| STUD SIZE | PART NO. | "L" | "S" |
|---------------------------|----------|-------|-------|
| .500-13 UNC-2A 208A | 353700 | 23.63 | 6.91 |
| | 353702 | 30.63 | 13.91 |
| | 353703 | 37.63 | 20.91 |
| | 353704 | 40.63 | 23.91 |
| .625-18 UNF-2A 417A | 353705 | 23.63 | 6.91 |
| | 353707 | 30.63 | 13.91 |
| | 353708 | 37.63 | 20.91 |
| | 353709 | 40.63 | 23.91 |
| .750-16 UNF-2A 600A | 353710 | 23.63 | 6.91 |
| | 353712 | 30.63 | 13.91 |
| | 353713 | 37.63 | 20.91 |
| | 353714 | 40.63 | 23.91 |
| 1.000-14 UNS-2A 800A | 353715 | 23.63 | 6.91 |
| | 353717 | 30.63 | 13.91 |
| | 353718 | 37.63 | 20.91 |
| | 353719 | 40.63 | 23.91 |
| 1.125-12 UNF-2A 1000A | 353720 | 23.63 | 6.91 |
| | 353722 | 30.63 | 13.91 |
| | 353723 | 37.63 | 20.91 |
| | 353724 | 40.63 | 23.91 |
| 1.250-12 UNF-2A 1200A | 353725 | 23.63 | 6.91 |
| | 353727 | 30.63 | 13.91 |
| | 353728 | 37.63 | 20.91 |
| | 353729 | 40.63 | 23.91 |
| 1.500-12 UNF-2A 1700 A | 353730 | 23.63 | 6.91 |
| | 353732 | 30.63 | 13.91 |
| | 353733 | 37.63 | 20.91 |
| | 353734 | 40.63 | 23.91 |
| 1.625-12 UN-2A 2000A | 353735 | 23.63 | 6.91 |
| | 353737 | 30.63 | 13.91 |
| | 353738 | 37.63 | 20.91 |
| | 353739 | 40.63 | 23.91 |



2 PIECE EXTERNAL CLAMP