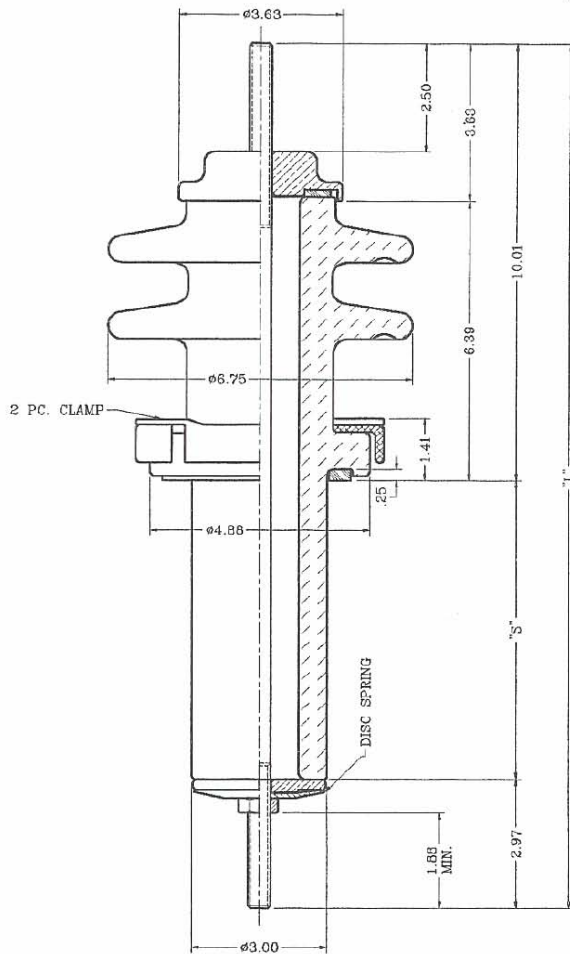


POWER BUSHING ASSEMBLIES 8.7kV CLASS, 95kV BIL, 10.25" CREEP

These bushings are designed for transformer and special power apparatus applications. The electrical ratings given are based on use in a liquid filled transformer with the lower end of the bushing under oil. Porcelain is gray glazed all over and the top sk are designed for outdoor application.

Clamps and washers are non-magnetic. Constant gasket pressure to top terminal is maintained by disc springs to compensate for thermal expansion and contraction of the copper stud. Nitrile (Buna-N) gasket is standard. For ordering assemblies with the cork rubber composition gaskets, add the suffix "C" to the part number.

Bushings are designed for mounting in $\phi 3.13$ (min.) hole.



STUD SIZE	PART NO.	"L"	"S"
.500-13 UNC-2A 208A	352600	19.89	6.91
	352602	26.89	13.91
	352603	33.89	20.91
	352604	36.89	23.91
.625-18 UNF-2A 417A	352605	19.89	6.91
	352607	26.89	13.91
	352608	33.89	20.91
.750-16 UNF-2A 600A	352609	36.89	23.91
	352610	19.89	6.91
	352612	26.89	13.91
1.000-14 UNS-2A 800A	352613	33.89	20.91
	352614	36.89	23.91
	352615	19.89	6.91
1.125-12 UNF-2A 1000A	352617	26.89	13.91
	352618	33.89	20.91
	352619	36.89	23.91
1.250-12 UNF-2A 1200A	352620	19.89	6.91
	352622	26.89	13.91
	352623	33.89	20.91
1.500-12 UNF-2A 1700 A	352624	36.89	23.91
	352625	19.89	6.91
	352627	26.89	13.91
1.625-12 UN-2A 2000A	352628	33.89	20.91
	352629	36.89	23.91
	352630	19.89	6.91
	352632	26.89	13.91
	352633	33.89	20.91
	352634	36.89	23.91
	352635	19.89	6.91
	352637	26.89	13.91
	352638	33.89	20.91
	352639	36.89	23.91

