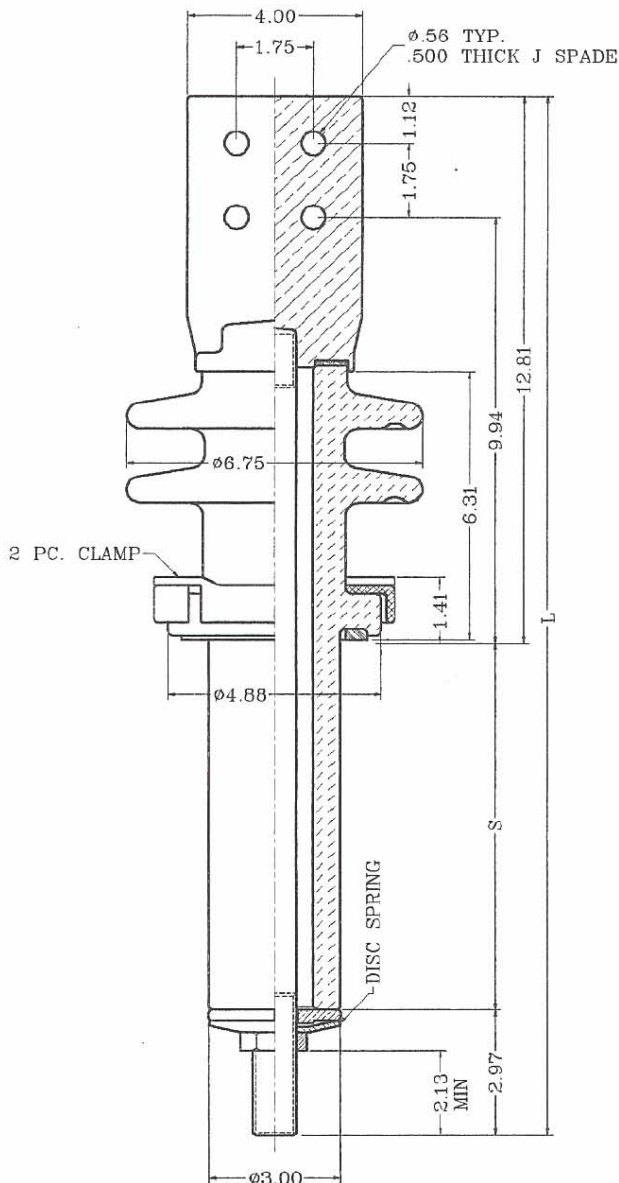


## POWER BUSHING ASSEMBLIES 8.7kV CLASS, 95kV BIL, 10.25" CREEP

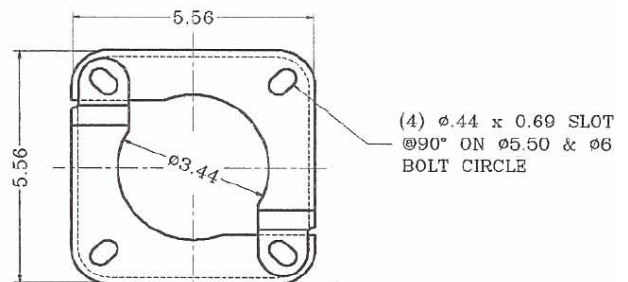
These bushings are designed for transformer and special power apparatus applications. The electrical ratings given are based on use in a liquid filled transformer with the lower end of the bushing under oil. Porcelain is gray glazed all over and the top skirt are designed for outdoor application.

Clamps and washers are non-magnetic. Constant gasket pressure to top terminal is maintained by disc springs to compensate for the thermal expansion and contraction of the copper stud. Nitrile (Buna-N) gasket is standard. For ordering assemblies with the cork-rubber composition gaskets, add the suffix "C" to the part number.

Bushings are designed for mounting in  $\phi 3.13$  (min.) hole.



STUD SIZE	PART NO.	"L"	"S"
.500-13 UNC-2A 208A	352400	22.75	6.91
	352402	29.75	13.91
	352403	36.75	20.91
	352404	39.75	23.91
.625-18 UNF-2A 417A	352405	22.75	6.91
	352407	29.75	13.91
	352408	36.75	20.91
.750-16 UNF-2A 600A	352409	39.75	23.91
	352410	22.75	6.91
	352412	29.75	13.91
1.000-14 UNS-2A 800A	352413	36.75	20.91
	352414	39.75	23.91
	352415	22.75	6.91
1.125-12 UNF-2A 1000A	352417	29.75	13.91
	352418	36.75	20.91
	352419	39.75	23.91
	352420	22.75	6.91
1.250-12 UNF-2A 1200A	352422	29.75	13.91
	352423	36.75	20.91
	352424	39.75	23.91
	352425	22.75	6.91
1.500-12 UNF-2A 1700 A	352427	29.75	13.91
	352428	36.75	20.91
	352429	39.75	23.91
	352430	22.75	6.91
1.625-12 UN-2A 2000A	352432	29.75	13.91
	352433	36.75	20.91
	352434	39.75	23.91
	352435	22.75	6.91
	352437	29.75	13.91
	352438	36.75	20.91
	352439	39.75	23.91



Rev.2, August 1999

2 PIECE EXTERNAL CLAMP