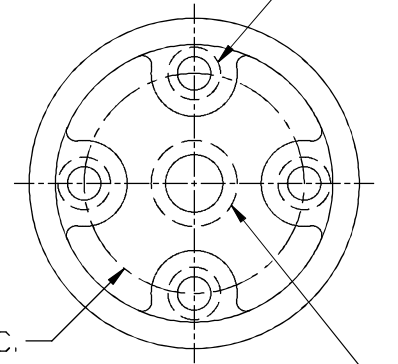


(4) 1/2-13 TH'D HOLES
× 11/16" GOOD THREAD



VIEW "A-A"
(TYP. TOP & BOTTOM)

DESCRIPTION
HIGH-STRENGTH BUS INSULATOR

UNGLAZED FIRING SURFACE

DIMENSIONS
HEIGHT 10.375" [264mm]
DIAMETER 7.00" [178MM]
BOLT CIRCLE DIA. 3.00" [76MM]
LEAKAGE DISTANCE 19.00" [483MM]

MECHANICAL VALUES
TENSILE 7,900LBS [35kN]
COMPRESSION 50,000LBS [222kN]
CANTILEVER 3,100LBS [14kN]
TORSION 14,800LBS [66kN]

NOTES:

- 1) INSULATOR MATERIAL = WET PROCESS PORCELAIN WITH ANSI #70 LIGHT GRAY GLAZE
- 2) INSERT MATERIAL = GALVANIZED STEEL

ELECTRICAL VALUES
DRY WITHSTAND (1 MIN) 80kV
DRY FLASHOVER 80kV
DEW WITHSTAND (10 SEC) 70kV
DEW FLASHOVER 70kV
IMPULSE WITHSTAND + 150kV
IMPULSE WITHSTAND - 150kV



P.O. BOX 338, ROSS, OH 45061 USA
PHONE: (513) 923-2712 FAX: (513) 923-1978
EMAIL: SALES@MEISTERINTL.COM
WEB: MEISTERINTL.COM

PART# MI-HSB150
HIGH STRENGTH PORCELAIN BUS INSULATOR
24 - 34.5kV 150BIL