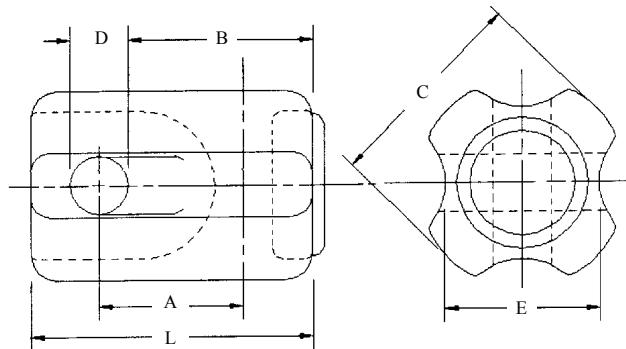


GUY STRAIN INSULATORS



DIMENSIONS

CATALOG NUMBER	ANSI CLASS	DIM. L	DIM. A	DIM. B	DIM. C	DIM. D	DIM. E	MAXIMUM CABLE SIZE	ULTIMATE STRENGTH	WT. PER 100
U54 - 1	54 - 1	3 1/2"	1 3/4"	2 1/2"	2 1/2"	5/8"	1 3/4"	3/8"	10000 LBS.	100 LBS.
U54 - 2	54 - 2	4 1/4"	2 1/4"	3"	2 7/8"	7/8"	2 1/8"	1/2"	12000 LBS.	155 LBS.
U54 - 3	54 - 3	5 1/2"	3 1/8"	4 1/16"	3 3/8"	1"	2 3/8"	5/8"	20000 LBS.	270 LBS.
U54 - 4	54 - 4	6 3/4"	2 5/8"	4 1/2"	3 1/2"	1"	2 3/8"	5/8"	20000 LBS.	428 LBS.

ELECTRICAL VALUES

CATALOG NUMBER	FLASHOVER		LEAKAGE DISTANCE
	DRY	WET	
U54 - 1	25 kV	12 kV	1.625"
U54 - 2	30 kV	15 kV	1.825"
U54 - 3	35 kV	18 kV	2.25"
U54 - 5	40 kV	23 kV	3.0"

THE ABOVE STRAIN INSULATORS ARE OFFERED IN A "SKY GRAY" GLAZE.
 FOR BROWN GLAZE, CHANGE THE SUFFIX "G" TO A "B".
 EACH OF THE ABOVE CONFORM TO ANSI STANDARD C29.4.